

## Renaissance Montgomery Hotel & Spa at the Convention Center



### **Hotel Reservations**

Each participant will be responsible for making their own room reservations. Participants are urged to stay at the Renaissance Montgomery Hotel & Spa as our contract with them requires that a minimum number of rooms be occupied by conference attendees.

#### CONFERENCE ATTENDEES

A reduced rate of \$150.00 (plus 14% tax and \$2.25 City fee) per night for Standard Deluxe Room accommodations is available by clicking the link below or by calling 1-877-545-0311. To get the special rate, you must ask for the Auburn Engineering SE Rail Hwy Safety Conference group rate. The hotel will guarantee these special rates until Friday, May 23, 2014. Any reservations after this date will be based on availability and market price.

[Book your group rate: Auburn Engineering SE Rail Hwy Safety Conference >>](#)

#### GOVERNMENT EMPLOYEES

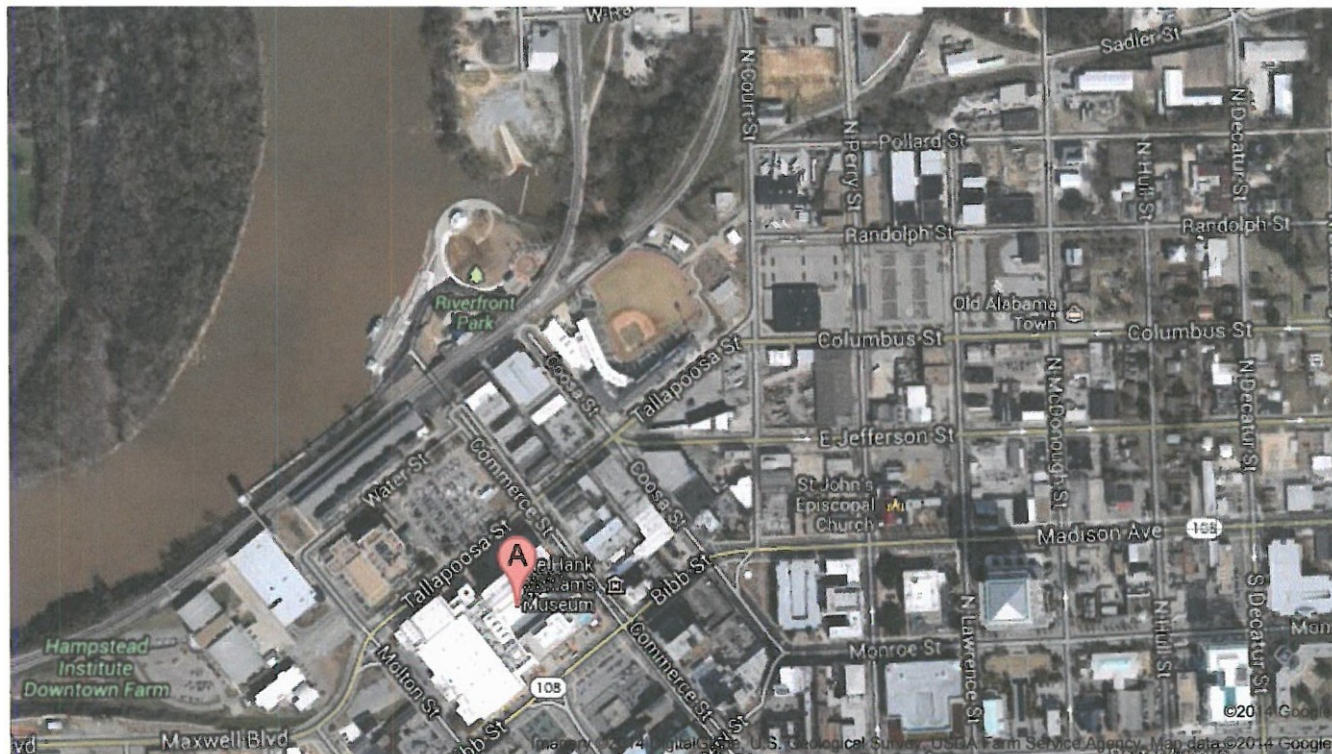
The hotel offers a government rate of \$83.00 (plus 14% tax and \$2.25 City fee) per night for Standard Guest Room accommodations. You may make reservations by clicking the link below or by calling 1-877-545-0311 and requesting the Government rate for the Auburn Engineering SE Rail Hwy Safety Conference. The hotel will guarantee the availability of a certain number of rooms at the Government rate until Friday, May 23, 2014. Any reservations after this date will be based on availability and market price.

[Book your group rate: Auburn Engineering SE Rail Hwy Safety Conference Govt Rate >>](#)

### **About the Hotel**

Unique among downtown Montgomery hotels, the Renaissance Montgomery Hotel & Spa at the Convention Center boasts stunning architecture highlighted by modern amenities and a rooftop pool. Situated in downtown Montgomery, AL, near the Maxwell Air Force Base, this hotel features over 103,000 square feet of meeting space, an 1,800 seat Performing Arts Center, a 73,000 square foot exhibit hall, and a 9,000 square foot European Spa. Comfort reigns supreme in each of our guest rooms, featuring high tech amenities such as a high-definition LCD TV, wireless and touch screen phones, and a connectivity panel for all your electronic devices. Enjoy delectable cuisine at The House restaurant, or mingle at The Exchange bar and lounge at this chic 4-diamond hotel in Montgomery's historic downtown area. Enjoy the delights of Alabama's Capital at the finest of Montgomery, Alabama hotels, the Renaissance Montgomery Hotel & Spa. For more info visit: [renaissancemontgomery.com](http://renaissancemontgomery.com)

## Map & Directions



[VICII | argcr Map](#)

## Parking

### **1. Hotel: Renaissance Montgomery Hotel and Spa Parking Deck**

The Hotel Parking Deck entrance is located on the Bibb Street side of the hotel.

Self Park Rates are: 0-30 min. FREE; Up to 2 hrs. \$4.00; 2 to 6 hrs. \$8.00; 6 to 10 hrs. \$10.00; Overnight \$12.00

Valet Parking: 0 to 10 hrs. \$13.00; Overnight \$18.00

### **2. MATS Parking Deck**

Located at the corner of Moulton and Bell Street

Hours & Rates: Monday- Friday 6:30a.m. to 6:00p.m. - \$1.00/hr

Monday – Friday 6:00p.m. to 6:00a.m. – No Charge

### **3. Biscuits / Riverwalk Stadium Parking**

Open Daily with no attendant and no charge except game days it is \$4.00 (NOTE: There are home games @ 7:05 p.m. on 4/3 & 4/4)

### **4. Embassy Suites Hotel**

Located across Tallapoosa Street from the Renaissance Hotel. Rates are \$5.00/ day

### **5. Montgomery Chamber of Commerce Visitors Bureau**

Located off Water Street under the train station.

Monday – Friday 6:00a.m. to 5:00p.m. is permit parking only. No charge to park evenings and weekends.

## **6. Commerce Street / Tallapoosa Street Lot**

Located across from the front entrance to the hotel at the Northwest corner of Tallapoosa and Commerce Streets. Monday – Friday 6:00a.m. to 5:00 p.m. parking with permit only.  
No charge to park evenings and weekends.

## **7. Street Parking**

Metered Parking Spaces

Meters apply Monday – Friday 8:00a.m. to 5:00p.m. No charge for evenings and weekends.